

Front Door via Security Intercom System to:

COMMUNAL ENTRANCE FOYER

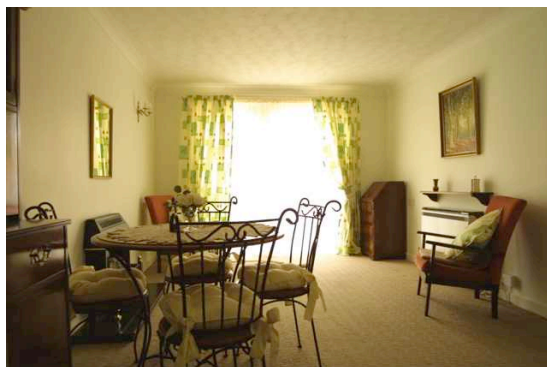
COMMUNAL RESIDENTS' LOUNGE

Own Door to ENTRANCE HALL

Coats cupboard.

LOUNGE
4.72m x 3.27m (15'6" x 10'7")

Electric night storage heater.
Upvc double glazed patio doors to the rear.



Arch to:

KITCHENETTE

Inset stainless steel sink and drainer. Base cupboards with worktops. Wall cupboards over. Built-in oven and electric hob. Extractor hood above.

BEDROOM
3.65m x 2.62m (12'0" x 8'7")

Electric night storage heater.
Fitted wardrobes with mirror doors.



BATHROOM

Bath with 'Mira Zest' shower over, handbasin set in vanity unit and wc. Tiled walls.

OUTSIDE:

Possible parking space (subject to availability).

TENURE

Leasehold.

Council Tax Band **B.**

DIRECTIONS:

On foot from the DMA office, turn left along Belle Vue Street and turn right at the end onto West Avenue. Chapel Court is located on the left hand side on the corner of Station Avenue.

Viewing strictly by appointment only through DMA Estate Agents